

TECHNOTE
[14/2014]

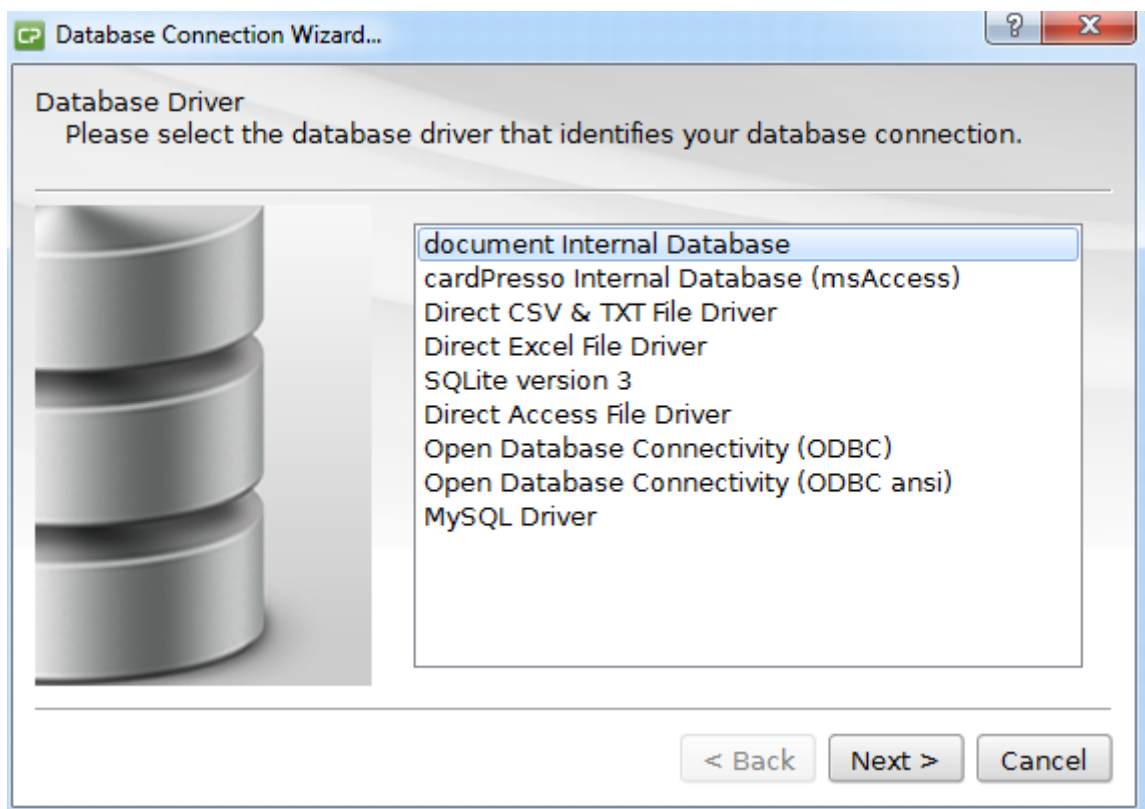
DATE: May, 2015
AUTHOR: cardPresso TECHNICAL SUPPORT
PRODUCT/AREA: Database

Subject: What is the Document Internal Database

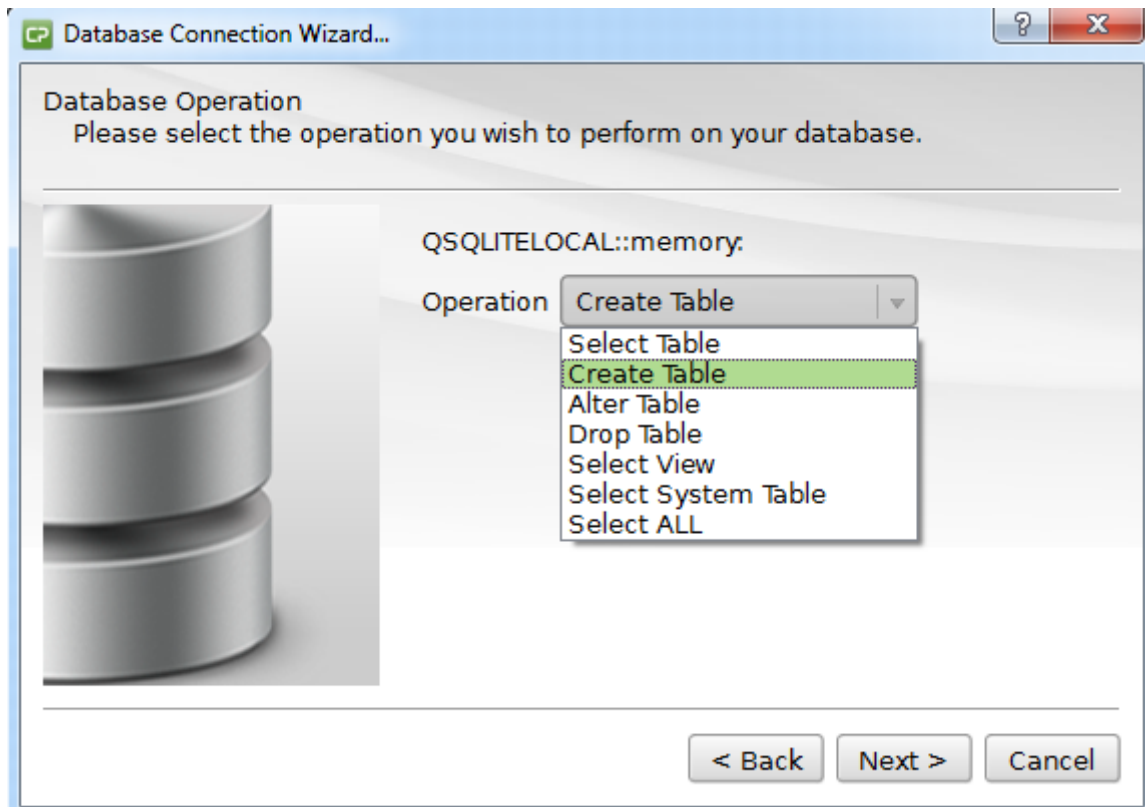
cardPresso's **Document Internal Database** is a SQL Lite database, saved with the .card file where it is created and only accessible through this same file.

To create it please follow the steps described below:

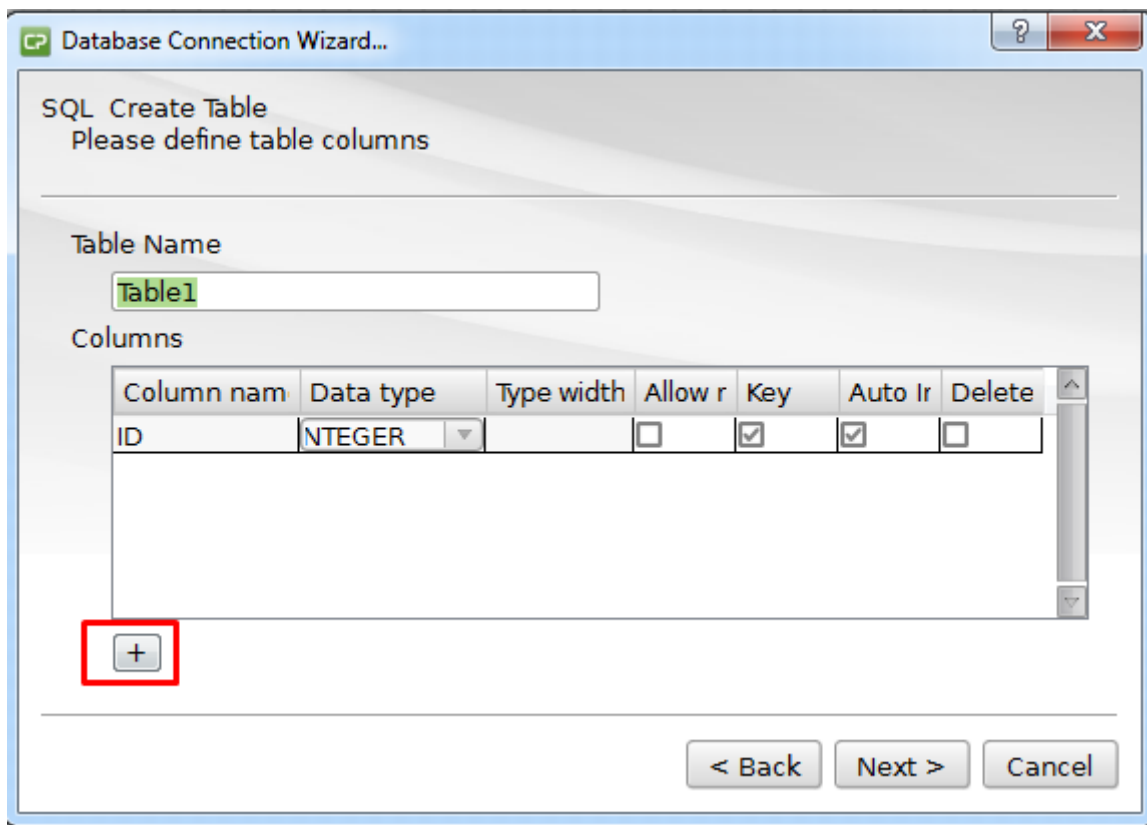
Open cardPresso's **Database Connection Wizard** and select the first option.



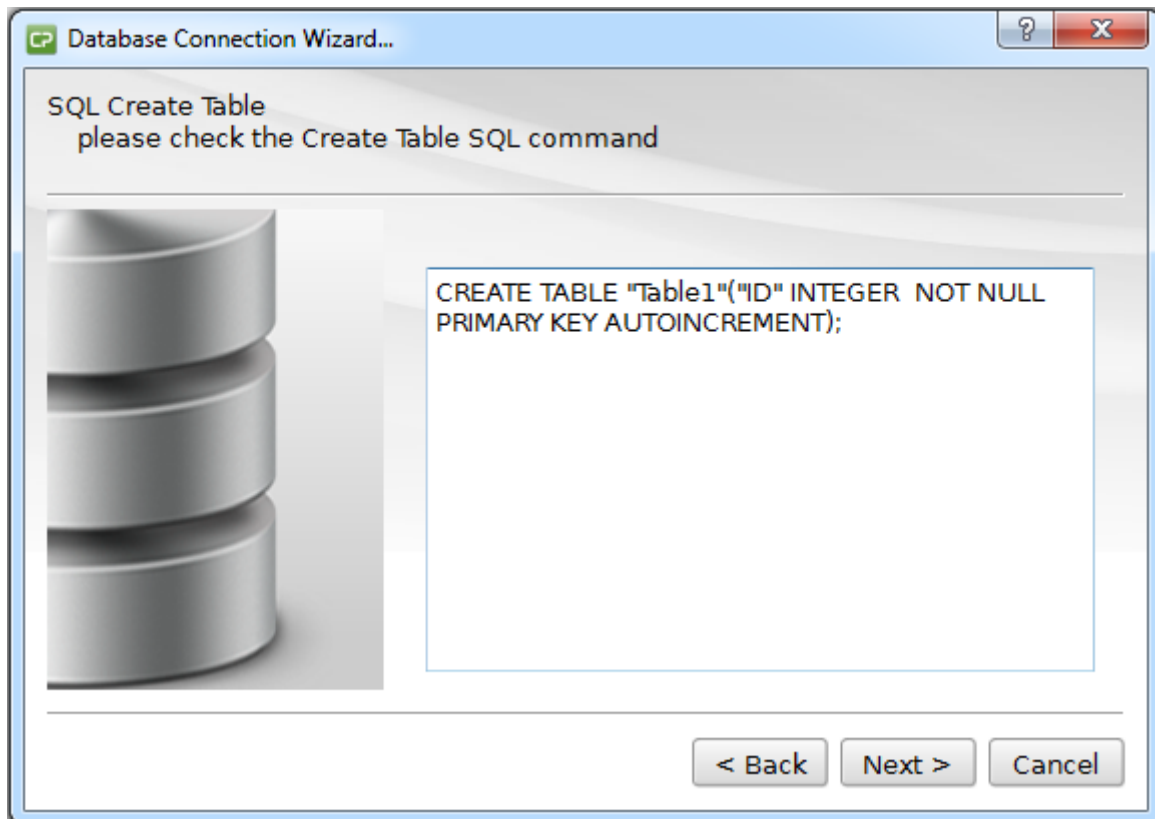
Select the **Create Table** option:



On the next step you'll be able to define your table name and create it's columns.



cardPresso generates the script to create the database.



After selecting the table you've just created, proceed with the wizard, until finished.

